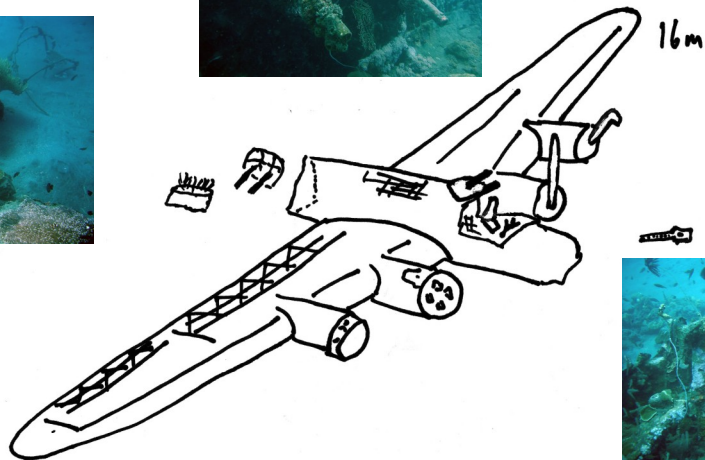
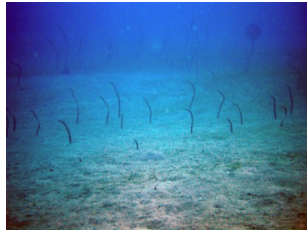


# Dive Site Map

## B-17, Flying Fortress — Easy Dive (9 - 16m)

Descend to the sea floor and swim above the sea grass and Sand Eels. Arrive at the wing tip in approx 9 metres. Look at the accumulation of hard coral formations along the wing, the engines are still in place but some of the propellers have been removed. The cockpit is open, look at the controls and pilots seat, just above is the twin gun placement. Follow the other wing down to a maximum of 16 m.



S.KNIGHTS 07'

### Thing to look For

#### Corals;

Massive Porites, Tubestria Micrantha, Acropora Branching and Tabulate, Pocillopora, Seriatopora Hystrix, Galaxia, to name but a few, plenty more.

#### Fish;

Bat Fish, Anemone Fish, Blue Fin Trevally, Glass Fish, Damsels, Butterfly Fish, Lion Fish, Harlequin Sweetlips and much more.

#### Other;

Feather & Basket Stars, Octopus, Christmas Tree Worms, Coral Clams and a variety of Algaes.